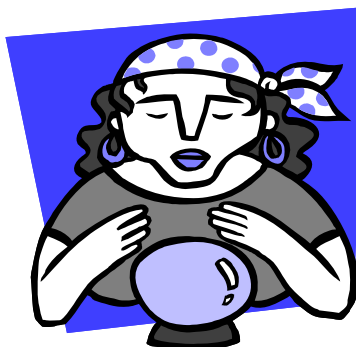


Margery the Fortune Teller

Corn



Margery uses her crystal ball to forecast the highest price in the year ahead. She sells the highest price for December corn in the year before harvest. (starting Nov 1 of the prior year, and up to September 30).

<u>Year</u>	<u>date</u>	high price Chicago December Corn Futures	percent pre-harvest priced	Pipestone Nearby Corn Basis Friday Oct 12-18	Pre-harvest average	Pipestone Price Friday Oct 12-18	Margery's weighted** average
1989	31-Jan-89	\$2.7950	75%	(\$0.26)	\$2.54	\$2.08	\$2.42
1990	3-Jul-90	\$2.9050	75%	(\$0.32)	\$2.58	\$1.98	\$2.43
1991	2-Aug-91	\$2.6850	75%	(\$0.36)	\$2.32	\$2.15	\$2.28
1992	2-Mar-92	\$2.7475	75%	(\$0.25)	\$2.50	\$1.83	\$2.33
1993	6-Jul-93	\$2.5850	75%	(\$0.29)	\$2.30	\$2.20	\$2.27
1994	17-Jun-94	\$2.7500	75%	(\$0.35)	\$2.41	\$1.83	\$2.26
1995	18-Sep-95	\$3.1450	75%	(\$0.47)	\$2.67	\$2.78	\$2.70
1996	12-Jul-96	\$3.8350	75%	(\$0.34)	\$3.49	\$2.46	\$3.23
1997	27-Mar-97	\$2.9650	75%	(\$0.44)	\$2.53	\$2.38	\$2.49
1998	7-Nov-97	\$2.9450	75%	(\$0.62)	\$2.33	\$1.64	\$2.16
1999	11-Nov-98	\$2.5925	75%	(\$0.61)	\$1.98	\$1.38	\$1.83
2000	3-May-00	\$2.6725	75%	(\$0.52)	\$2.15	\$1.56	\$2.00
2001	29-Dec-00	\$2.6175	75%	(\$0.51)	\$2.11	\$1.57	\$1.97
2002	11-Sep-02	\$2.9250	75%	(\$0.31)	\$2.61	\$2.23	\$2.52
2003	15-May-03	\$2.5150	75%	(\$0.34)	\$2.17	\$1.80	\$2.08
2004	8-Apr-04	\$3.3650	75%	(\$0.30)	\$3.07	\$1.77	\$2.74
2005	18-Jul-05	\$2.7000	75%	(\$0.63)	\$2.08	\$1.41	\$1.91
2006	17-May-06	\$2.8675	75%	(\$0.46)	\$2.41	\$2.69	\$2.48
2007	22-Feb-07	\$4.2775	75%	(\$0.45)	\$3.83	\$3.06	\$3.64
2008	26-Jun-08	\$7.8800	75%	(\$0.45)	\$7.43	\$3.58	\$6.47
2009	4-Nov-08	\$4.7700	75%	(\$0.30)	\$4.47	\$3.42	\$4.21
2010	24-Sep-10	\$5.2175	75%	(\$0.86)	\$4.36	\$4.77	\$4.46
1990-2010				(\$0.44)	\$2.94	\$2.31	\$2.78

** Margery is willing to price grain up to her insurance level (75%). Her final price will be a weighted average of up to 75% from pre-harvest sales and the balance from harvest sales, at the harvest price.



©2008 Regents of the University of Minnesota. All rights reserved.

Edward Usset usset001@umn.edu
Grain Marketing Specialist